

SOLAR'S MOST TRUSTED



REC TWINPEAK 4 BLACK SERIES

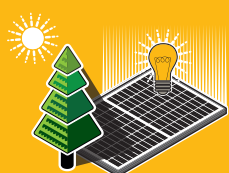
PREMIUM SOLAR PANELS WITH SUPERIOR PERFORMANCE

REC TwinPeak 4 Black Series solar panels feature an aesthetically-pleasing full-black design with high panel efficiency and power output, enabling customers to get the most out of the space used for the installation.

Combined with industry-leading product quality and the reliability of a strong and established European brand, REC TwinPeak 4 Black Series panels are ideal for residential and commercial rooftops worldwide.



**MORE POWER
OUTPUT PER M²**



**FEATURING REC'S PIONEERING
TWIN DESIGN**



**100%
PID FREE**



**SUPER-STRONG
FRAME**



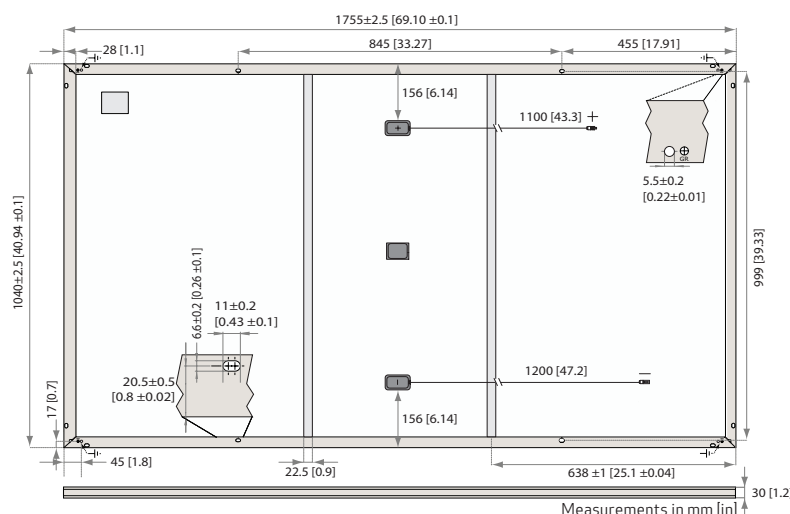
ELIGIBLE

REC TWINPEAK 4 BLACK SERIES

PRODUCT SPECIFICATIONS

GENERAL DATA

Cell type:	120 half-cut mono c-Si p-type cells, 6 strings of 20 cells in series
Glass:	3.2 mm solar glass with anti-reflective surface treatment in accordance with EN 12150
Backsheet:	Highly resistant polymer (black)
Frame:	Anodized aluminum (black) with silver support bars
Junction box:	3-part, 3 bypass diodes, lead-free IP68 rated, in accordance with IEC 62790
Connectors:	Stäubli MC4 PV-KBT4/KST4 (4 mm ²) in accordance with IEC 62852, IP68 only when connected
Cable:	4 mm ² solar cable, 1.1 m + 1.2 m in accordance with EN 50618
Dimensions:	1755 x 1040 x 30 mm (1.83 m ²)
Weight:	20.0 kg
Origin:	Made in Singapore



ELECTRICAL DATA

Product Code*: RECxxxTP4 Black

Power Output - P _{MAX} (Wp)	350	355	360	365	370
Watt Class Sorting - (W)	0/+5	0/+5	0/+5	0/+5	0/+5
Nominal Power Voltage - V _{MPP} (V)	33.1	33.5	33.9	34.3	34.7
Nominal Power Current - I _{MPP} (A)	10.57	10.60	10.62	10.65	10.68
Open Circuit Voltage - V _{OC} (V)	40.6	40.7	40.8	40.9	41.1
Short Circuit Current - I _{SC} (A)	11.22	11.27	11.31	11.36	11.41
Panel Efficiency (%)	19.1	19.4	19.7	20.0	20.3
Power Output - P _{MAX} (Wp)	264	268	272	276	280
Nominal Power Voltage - V _{MPP} (V)	31.0	31.3	31.7	32.1	32.5
Nominal Power Current - I _{MPP} (A)	8.54	8.56	8.58	8.60	8.63
Open Circuit Voltage - V _{OC} (V)	38.0	38.1	38.2	38.2	38.4
Short Circuit Current - I _{SC} (A)	9.06	9.10	9.13	9.18	9.22

Values at standard test conditions (STC: air mass AM1.5, irradiance 1000 W/m², temperature 25°C), based on a production spread with a tolerance of P_{MAX}, V_{OC} & I_{SC} ±3% within one watt class. Nominal module operating temperature (NMOT: air mass AM1.5, irradiance 800 W/m², temperature 20°C, windspeed 1 m/s). * Where xxx indicates the nominal power class (P_{MAX}) at STC above.

CERTIFICATIONS

IEC 61215:2016, IEC 61730:2016, UL 61730	
IEC 62804	PID
IEC 61701	Salt Mist
IEC 62716	Ammonia Resistance
ISO 11925-2	Ignitability (Class E)
IEC 62782	Dynamic Mechanical Load
IEC 61215-2:2016	Hailstone (35mm)
ISO 14001, ISO 9001, IEC 45001, IEC 62941	



takeaway
for the easy way
take-e-way WEEE-compliant
recycling scheme

TEMPERATURE RATINGS*

Nominal Module Operating Temperature:	44.6°C (±2°C)
Temperature coefficient of P _{MAX} :	-0.34 %/°C
Temperature coefficient of V _{OC} :	-0.26 %/°C
Temperature coefficient of I _{SC} :	0.04 %/°C

*The temperature coefficients stated are linear values

MAXIMUM RATINGS

Operational temperature:	-40 ... +85°C
Maximum system voltage:	1000 V
Maximum test load (front):	+ 7000 Pa (713 kg/m ²)*
Maximum test load (rear):	- 4000 Pa (407 kg/m ²)*
Max series fuse rating:	25 A
Max reverse current:	25 A

* See installation manual for mounting instructions.
Design load = Test load / 1.5 (safety factor)

WARRANTY

	Standard	REC ProTrust
Installed by an REC Certified Solar Professional	No	Yes
System Size	All	≤25 kW 25-500 kW
Product Warranty (yrs)	20	25
Power Warranty (yrs)	25	25
Labor Warranty (yrs)	0	25
Power in Year 1	98%	98%
Annual Degradation	0.5%	0.5%
Power in Year 25	86%	86%

See warranty documents for details. Conditions apply

DELIVERY INFORMATION

Panels per pallet:	33
Panels per 40 ft GP/high cube container:	858 (26 pallets)
Panels per 13.6 m truck:	924 (28 pallets)
Panels per 53 ft truck:	924 (28 pallets)

LOW LIGHT BEHAVIOUR

Typical low irradiance performance of module at STC:

